

Quiz Announcement

As part of Mac Mahan's celebration of the 300th anniversary of the founding of Georgetown and the 125th anniversary of the founding of the Sheepscot Island Company, Jay Rogers and Nick Stone have put together a Mac Mahan History Quiz for your enjoyment and puzzlement. Individuals or teams can fill out a quiz, available at the Lodge or on the Mac Mahan website. Answers and prizes will be given out at the Mac Mahan History Night on Sunday, August 14 at the Playhouse. It will be a fun night, with refreshments and a showing of the video of films of Mac Mahan from the 1930's. We hope everyone can come, but if you are unable to attend and still want to enter your quiz for a prize, please send it to Megan. Answers will also be posted on the website after August 14.

More details about the Mac Mahan History Night to follow, but meanwhile enjoy the quiz!

MAC MAHAN ISLAND HISTORY QUIZ

1. Know your cottages

1. Which cottage was supposed to have only two floors and its owners were surprised when they saw it for the first time to discover that it had a third floor?
2. Which cottage has a ballroom?
3. Which cottage has a monk's prayer room?
Extra Credit: What was the monk's name?
4. Which cottage was moved twice?
E.C.: Where was its first location?
5. Which cottage was lived in by the mother of the famous Dr. Spock?
6. Which cottage had the studio of a well-known artist added to it?
E.C.: Where was that artist's studio originally located?
7. Which cottages on the island are still owned by the family that built them?
8. What is the oldest building on the island?
9. Which cottages had sleeping porches added to them?
10. Which cottages were originally cabins for a boys and girls camp on the island?
11. Which cottage originally had hot and cold fresh and salt water?
12. Which two cottages were not originally built on the island but were floated over by barge?
13. The island actually had a resident named Father Pine. Which cottage did he live in?
E.C.: Which cottage did he build?
14. Which two cottages were originally connected by a covered walkway?
E.C.: Why?
15. Which cottage was built on an old cellar hole?
16. Which cottages other than the Fox Island house, used to have bridges leading to them?
17. Which cottage was originally twice the size that it is now?

18. Which cottage is almost twice the size of what it was originally?
19. What was the first summer cottage built.
20. Which cottage was originally built primarily as an artist's studio?
21. Which cottage was a Sears kit house?
22. Which cottage on the island still does not have electricity?
23. Which cottage has part of the old hotel incorporated as part of it?
24. Which cottages have their own well?
25. Which cottage has plaster walls?
E.C. Why?

2. Mystery Islanders

1. What person on the island has been coming the longest?
2. What family on the island originally owned the Rectory and donated the cottage to the church?
3. Which two families still on the island have a family member listed on the World War I memorial cross next to the chapel?
4. How many families now living on the island can you name who once owned a different cottage than they own now?
5. How many cottage owners can you name who were married on the island?
6. How many cottage owners can you name whose parents were married on the island?
7. How many cottage owners can you name whose parents met on the island?
8. What families still on the island have donated their boat to become the island boat?
9. What family still on the island used to row to Wiscasset in a family-sized rowing skiff?
10. What family with two daughters bought their cottage from a family with two daughters?

3. From the Archives

1. How many building lots was the island originally divided into?
 - a. 371
 - b. 438
 - c. 569
 - d. 608
2. What were the names of the founders of the Sheepscot Island Company?
 - a. John Gregson
 - b. Edward B. Nealley
 - c. Harry Nealley
 - d. George Hughes
 - e. George Pine
 - f. Waldron Pierce
 - g. Harry Merrill
3. What year was it incorporated?
 - a. 1891
 - b. 1894
 - c. 1896
 - d. 1901
4. What was the name of the hotel they built?
 - a. The Lodge
 - b. The Club House
 - c. The Seal and Porpoise
 - d. The Breakers
5. What were the shop buildings originally built as?
 - a. maids quarters for the hotel
 - b. overflow rooms for the hotel
 - c. utility rooms for the hotel
 - d. living quarters for the Superintendent and his family
6. What was the shop garage originally built as?
 - a. garage for the island carriage that took ladies to church
 - b. servants dining room for the hotel
 - c. maid's room for the Chauncey cottage
 - d. utility building for the waterworks.
7. The current Playhouse replaced the original Playhouse. What happened to it?
 - a. It was declared structurally dangerous and torn down
 - b. It burned down
 - c. It was sold for funds during the depression and moved off island
 - d. It collapsed after a heavy snowfall.

8. How many different steeples has the chapel had?

- a. two
- b. three
- c. four
- d. one

E.C. In whose name was the current steeple given, and which was their cottage?

9. Before the current tennis courts were created, there were earlier tennis courts. Where were they located?

- a. in the meadow in front of the Welches' cottage
- b. in Tarr's Field
- c. next to the Ice Pond
- d. behind the (new) Playhouse

10. Where was the old steamboat wharf?

- a. Where the condo docks are
- b. Where the Stinson's dock is
- c. Where the Waiting Room is
- d. Where the Jones dock is

11. Before the current dump, there was an earlier dump. Where was it located?

- a. On the other side of the road in Tarr's Field
- b. Just north of the sail boat yard
- c. In the inlet next to the Apple Orchard
- d. The Big Sheepscot

12. What was the Yacht Club built as originally?

- a. A small rental cottage owned by the Company
- b. A grocery store
- c. A library
- d. Overnight lodging for the Superintendent

E.C.: What was it used for just before it became the Yacht Club?

13. Where did the island superintendent live before the Lodge?

- a. Off island
- b. The shop buildings
- c. Fred Taft's House
- d. The Yacht Club
- e. A building next to the Lodge that has since been torn down.

14. Which of these island Postmistress guarded the candy counter for over thirty years?

- a. Greta Hacking
- b. Maureen Chase
- c. Harriet Coburn
- d. Dotty Stewart

15. There were originally plans for a salt water swimming pool. Where can you still see vestiges of its sluice wall?

- a. At the north beach
- b. At the Ice pond
- c. In an inlet on the Northwest Point
- d. In the inlet by the Ice Pond

16. Who was the shipwright from Westport who built the first dozen cottages on the island.

- a. Theo Lazell
- b. Waldron Pierce
- c. Ed Cleary
- d. Henry Blaisdell

E.C. Which cottage did he build for himself?

17. What was the name of the first steamer to serve the island?

- a. The Island Raider
- b. The Virginia
- c. The Island Belle
- d. The Naharanda

18. What was the name of the last?

- a. The Virginia
- b. The Island Belle
- c. The Balmy Days
- d. The Nellie G.

19. What were the names of the ferry boat that took passengers from Robinhood to Mac Mahan in the 40s and early 50s?

- a. The Nellie G.
- b. The Sally Jane
- c. The Holiday
- d. The Viking
- e. The Norseman

E.C. What was the name of the skipper?

20. What was the name of the pleasure boat that took islanders to Boothbay and back in the 50s and early 60s?

- a. The Holiday
- b. The Pink Lady
- c. The Stardust
- d. The Balmy Days

E.C. What was the name of the skipper?

21. The Company built a cottage called the Company Cottage as a rental property. What happened to it?

- a. It collapsed after a heavy snowfall
- b. It burned down
- c. It was sold and moved off island
- d. It was dismantled and its material sold to a builder on the mainland.

22. What was the little Waiting Room built for?

- a. the passenger waiting room of the steamboat
- b. the passenger waiting room for the old Rogers dock
- c. the passenger waiting room for the old Masters dock
- d. a children's clubhouse

23. What happened to the old hotel?

- a. It burned down
- b. It was torn down
- c. It was dismantled and its material sold to a builder on the mainland
- d. Its roof collapsed after a heavy snowfall.

24. What happened to the old Boathouse?

- a. It burned down
- b. It was torn down and its material sold to a builder on the mainland
- c. Part of it was torn down and another section was moved and added onto the back of the Hamilton's cottage to become an artist's studio.
- d. Its roof collapsed after a heavy snowfall.

25. Where was Bowdoin Gregson's cottage?

- a. On the foundation next to the Ice Pond
- b. Just up the hill from the condo docks
- c. Below the Pinney cottage next to the Wise cottage
- d. At the North Beach

4. From the S.I.Co. Minutes – compiled by Nick Stone

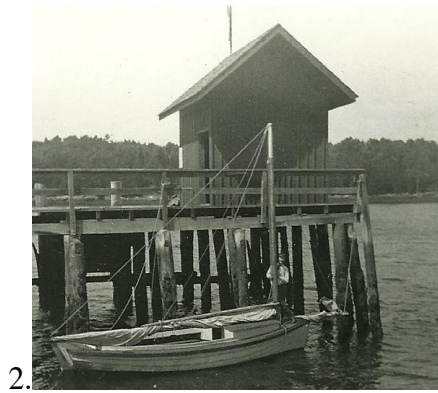
1. In 1953 a cottager wrote to the board complaining that “the ‘problem’ of my excitability has been permitted to obscure the main issue” of why she was bitten by another cottager’s pet while “amicably talking with” that cottager. The pet was a:
 - a.. parrot
 - b. dog
 - c. crow
 - d. pony
2. In 1965 the Board initiated a program to buy back Company shares owned by persons not associated with Mac Mahan. The maximum price per share that the Board was authorized to pay was:
 - a. \$10
 - b. \$5
 - c. \$1
 - d. 10 cents
3. That program resulted in 161 shares being acquired by the Company at a price per share of:
 - a. \$10
 - b. \$5
 - c. \$1
 - c. \$0.10
 - d. Zero
4. In 1943 the Board voted the following consequence if the annual assessment of \$25 was not paid:
 - a. Exclusion from community recreational events including Bingo, island picnics and square dances.
 - b. A 10% surcharge on ice, firewood, coal, kerosene, propane and cartage.
 - c. Suspension of water service.
5. 1947 was a particularly significant year for Mac Mahan because (*choose three*):
 - a. The shareholders authorized the Seal & Porpoise to be torn down.
 - b. Electricity came to Mac Mahan.
 - c. The current Lodge was purchased.

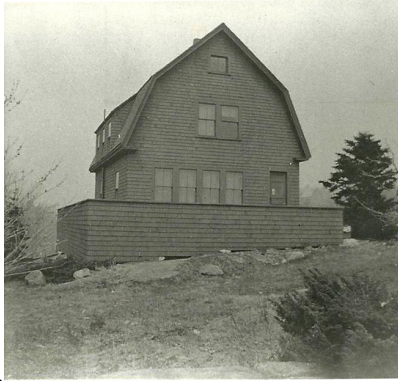
- d. The Company bought its first truck.
 - e. Bill Bisseth was first employed as Manager.
6. Throughout the 1930s the Board consistently attempted to attract families to Mac Mahan to buy lots and build cottages. Which *two* of the following factors were frequently cited in Board minutes as obstacles to the success of those efforts:
- a. The Great Depression.
 - b. Reductions in steamer service to Maine from New York and Boston.
 - c. The growth of commercial aviation.
 - d. Increased popularity of the automobile.
 - e. Increased popularity of golf.
7. In 1936, in the depths of the Depression and faced with expenses that regularly exceeded income, the Board:
- a. Increased the assessment and water rates.
 - b. Established a charge for salt water service.
 - c. Reduced the salary of the Manager.
 - d. Eliminated the annual assessment and increased water rates.
 - e. Eliminated the position of helper to the Manager.
8. In 1948 the Board considered raising additional income by:
- a. Selling timber to a local paper company.
 - b. Selling ice to Malden Island.
 - c. Buying a boat and establishing a Company ferry service.
 - d. Charging a fee for salt water.
9. The last sale by the Company of land for the construction of a cottage (excluding property swaps) occurred in:
- a. 1928
 - b. 1935
 - c. 1946
10. In 1935 the greatest controversy on Mac Mahan was whether or not to:
- a. Be “set apart” from Georgetown
 - b. Bring electricity to the Island.
 - c. Close the Seal & Porpoise.
 - d. Retire the old horse-drawn cart and purchase a gasoline-powered truck.
 - e. Dig a new well in Tarr’s field.
 - f. Cut a fire break across the island.
11. During the early 1950s the principal method of mosquito control on Mac Mahan was the aerial spraying of DDT.
- a. True
 - b. False

12. In 1941 the Sheepscoot Island Company:
- Changed its name from Sheepscoot Development Company to its present name.
 - Declared bankruptcy.
 - Bought the present Lodge.
 - Increased the size of the board from three to five.
13. The Company now provides all of the following for free. For which one did it formerly charge?
- Small boat tie-up at its docks
 - Use of the tennis courts
 - Salt water service
14. The former Mac Mahan Taxpayers Association was established to:
- Seek an increase in the annual tax rebate from Georgetown.
 - Seek reductions in the assessed values of property on Mac Mahan.
 - Represent those cottage owners who were not shareholders in advising the board how the annual tax rebates should be spent.
15. The role of the former Mac Mahan Cottagers Association most closely resembled the role of the present:
- Nominating Committee
 - Finance Committee
 - Chapel Committee
 - Recreation Committee
 - Safety Committee
 - Literary Committee
 - Land and Heritage Committee
16. In 1941 which of the following recreational facilities was relocated:
- Tennis courts
 - Rifle range
 - Putting green
 - the Playhouse
17. In 1942 Henry Moore, a Five Islands lobsterman, reported that while hauling traps in thick fog near the Black Rocks he had come upon a German U-Boat on the surface charging its batteries.
- True
 - False
18. In September 1948 significant infrastructure of the Company was destroyed by:
- A hurricane
 - Carpenter ants
 - Fire
 - Vandalism

MAC MAHAN HISTORY QUIZ, Part 5

Below are photos from the archives of twenty structures built on Mac Mahan. Some of them no longer exist, some still exist in their original locations, and some still exist but have been moved to a new location. Can you identify each structure and match it with a location on the Mac Mahan map?





7.



8.



9.



10.



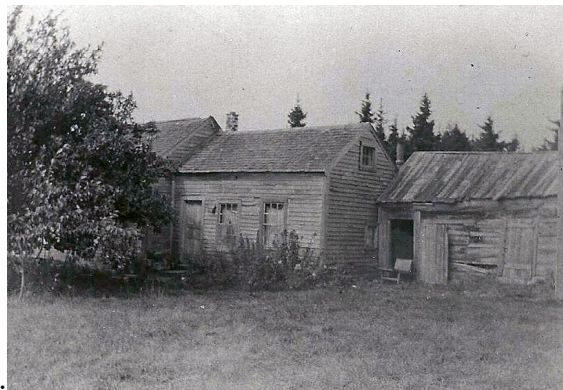
11.



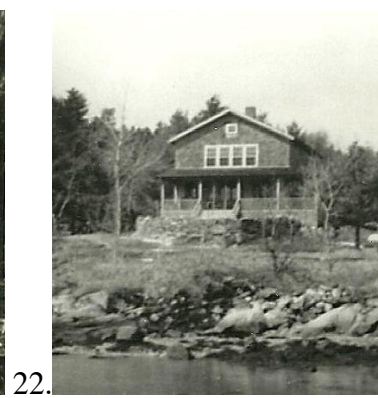
12.



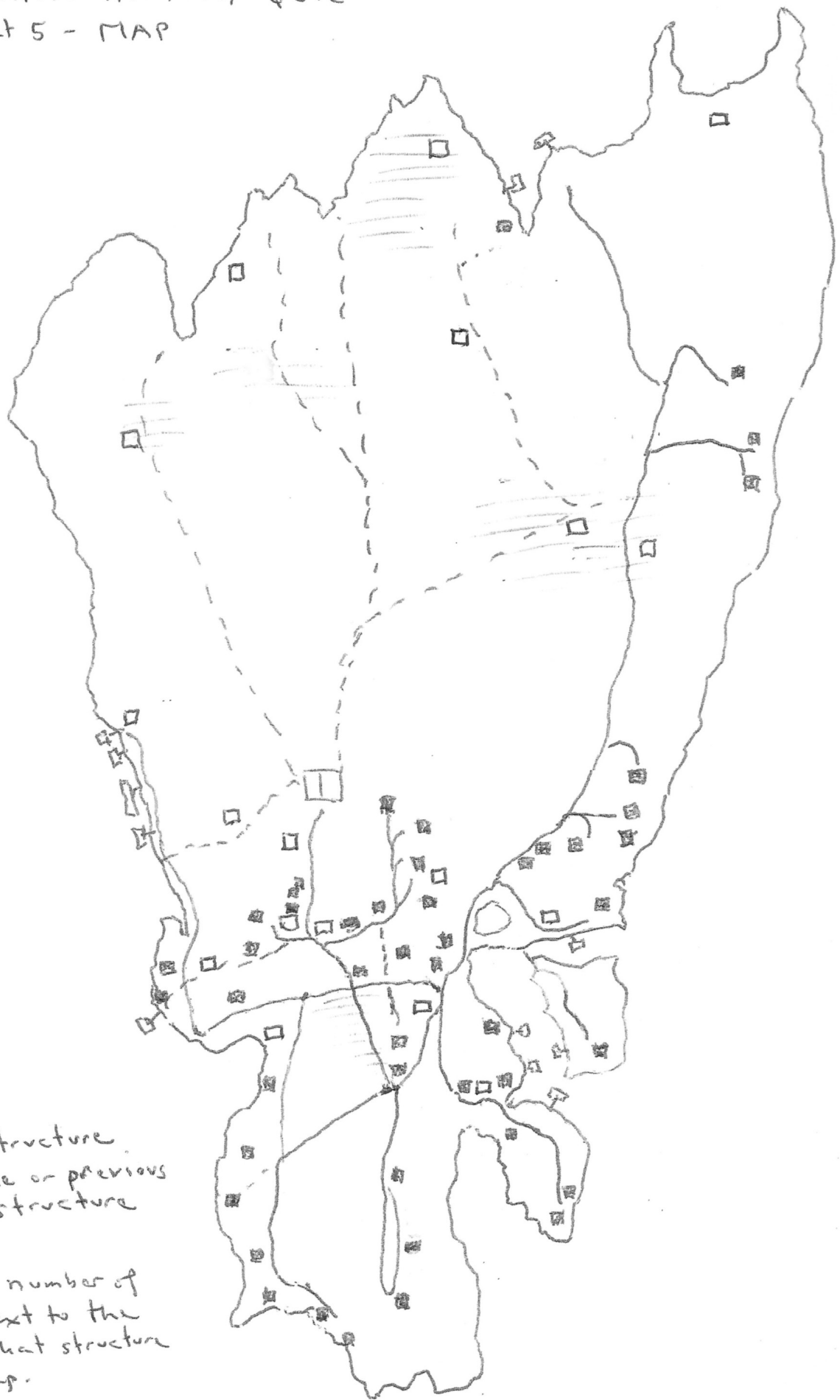
13.



14.



MAC MAHAN HISTORY QUIZ
Part 5 - MAP



- ▣ Existing structure
- Cellar hole or previous site of a structure

Write in the number of the photo next to the location of that structure on the map.